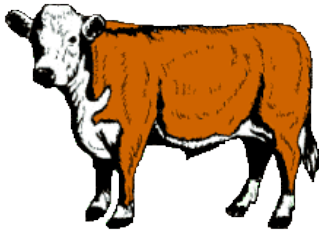


Open Class Beef Cattle

Department K



Superintendents:

Superintendent: Maggie Bouma (360) 751-4061

Assistant Superintendent: Ashlee Eatherton 360-751-7771

Entry Fees:

\$5.00 Per Head, Stall Fee (No Refunds)

Exhibitors can register at <http://cowlitzcountyfair.fairentry.com> starting Thursday, June 1, 2023 through 9:59 pm PST on Saturday, July 1, 2023.

In Time:

Animals accepted Tuesday, July 25, 2023 from 3:00 pm to 7:00 pm. Please see animal ingress maps on Fair website for directions on how to bring your animal to the Fair.

Release Time:

Exhibitors will be released from 6:00 am to 12:00 pm, noon, Sunday, July 30.

Specific Rules:

1. Exhibitors should read General Rules and Regulations and Livestock Department Rules found in the 2023 Exhibitor Handbook.
2. A copy of registration papers for each animal are required to accompany registration. Proof of ownership will be the name shown on the registration certificate.
3. Brucellosis – All female cattle over 5 months must be vaccinated for Brucellosis or tested negative to Brucellosis in the last 30 days.
4. All Oregon stock coming in must have brand stamp or a health certificate.
5. All Animals must go through a vet check.
6. Bedding will be furnished by the Fair. Owners will be responsible for the feed and care of their animals.
7. All livestock must be groomed and in show condition at the opening of the Fair each day.
8. Exhibitors are required to keep quarters clean, including wash rack after use.
9. Ear tattoos must be checked with the registration papers. Animals without legible tattoo will not be eligible for showing. Exhibitors need to arrange time with the Superintendent.
10. All cattle must be double tied in stalls.
11. All bulls over one year of age to be shown and lead with nose leads.
12. No exhibitors may receive more than two (2) awards in any one lot.

- 13. All cattle shown in groups must first have been shown as individuals.
- 14. Awards of rosettes are up to the Judge's discretion.
- 15. All 4-H and FFA animals must be registered in exhibitor or farm's name to show in Open Class.
- 16. The use of Cowlitz County Fair's livestock panels will be available on a first come first served basis. The panels will need to be checked out with the barn superintendent during haul-in/set-up and checked back into the barn superintendent at haul-out before you leave. Failure to return panels checked out to you will result in forfeiting premiums.

Exhibitor Conduct:

Any exhibitor displaying unacceptable conduct (i.e. profane language, abusive treatment) may, at the discretion of Superintendent and Fair Management, be dismissed and jeopardize awarding of points/premiums.

Show Schedule:

Saturday, July 29, 2023 at 10:00 am – Open Class Beef

Herdsmanship Scorecard:

The primary purpose of herdsmanship is to present animal exhibits to the public in a neat, orderly and attractive manner. Your exhibit should be made as educational as possible and attendants should be with herds and ready to answer questions from the public. It is our purpose to keep the barn clean throughout the Fair for the public. The awards will be paid to the herdsman. Must have three or more head.

Animals – Arrangement, Tying, Cleanliness and Grooming, Bedding, Regularity of Feeding	20%
Stalls – Arrangement of Equipment and Supplies, Cleanliness of Equipment, Supplies, Stalls and Alleys	25%
Display Effects – Decorations, Signs, Stall Cards	25%
Exhibitor – Appearance, Attitude, Courtesy, Skill	20%
Educational Value of Exhibit	<u>10%</u>
Total:	100%

Premiums:

1st = \$45.00 2nd = \$35.00 3rd = \$25.00 4th = \$15.00

Special Awards:

Superintendent's Award - Rosette
See additional awards listed below

Division A: BREEDING CATTLE

Classes: *Use the Lots Immediately Following*

- 1. Angus
- 2. Polled Hereford
- 3. Simmentals
- 4. Limousins
- 5. Pinzgauers
- 6. Maine Anjou

7. Hereford
8. Dexter
9. Mini Hereford
10. Braunvieh
11. Belted Galloway
12. Shorthorn
13. Other Breeds (List Breed)

Lots:

1. Junior Heifer Calf – Calved after January 1, same year
2. Winter Heifer Calf – Calved November 1 through December 31, previous year
3. Senior Heifer Calf – Calved September 1 through October 31, previous year
CALF CHAMPION – ROSETTE
RESERVE CALF CHAMPION - ROSETTE
4. Late Summer Yearling Heifer – Calved July 1 through August 31, previous year
5. Early Summer Yearling Heifer – Calved May 1 through June 30, previous year
6. Late Junior Yearling Heifer – Calved March 1 through April 30, previous year
JUNIOR CHAMPION FEMALE – ROSETTE
RESERVE JUNIOR CHAMPION FEMALE - ROSETTE
7. Early Junior Yearling Heifer – Calved January 1 through February 28, previous year
8. Senior Yearling Heifer – Calved August 1 through December 31, 2 years previous
SENIOR CHAMPION FEMALE – ROSETTE
RESERVE SENIOR CHAMPION FEMALE – ROSETTE
GRAND CHAMPION FEMALE – ROSETTE
RESERVE GRAND CHAMPION FEMALE - ROSETTE
SUPREME CHAMPION FEMALE - BANNER
RESERVE SUPREME CHAMPION FEMALE – BANNER
9. Female Over 2 Years - before August 1, 2 years previous, has calved or been certified with calf
10. Mature Cow – Over 3 Years
11. Female with Offspring – Calved January 1, current year or after
12. Two Females – Bred and owned by exhibitor
13. Junior Bull Calf – Calved after January 1, same year
14. Winter Bull Calf – Calved November 1 through December 31, previous year
15. Senior Bull Calf – Calved September 1 through October 31, previous year
CALF CHAMPION – ROSETTE
RESERVE CALF CHAMPION - ROSETTE
16. Late Summer Yearling Bull – Calved July 1 through August 31, previous year
17. Early Summer Yearling Bull – Calved May 1 through June 30, previous year
18. Late Junior Yearling Bull – Calved March 1 through April 30, previous year
JUNIOR CHAMPION BULL – ROSETTE
RESERVE JUNIOR CHAMPION BULL - ROSETTE
19. Early Junior Yearling Bull – Calved January 1 through February 28, previous year
20. Senior Yearling Bull – Calved September 1 through December 31, 2 years previous
21. Two Year Old Bull – Calved January 1 through August 31, 2 years previous
SENIOR CHAMPION BULL – ROSETTE

RESERVE SENIOR CHAMPION BULL – ROSETTE

GRAND CHAMPION BULL – ROSETTE

RESERVE GRAND CHAMPION BULL – ROSETTE

22. Steer – Must have proof of one registered parent

23. Two Bulls – Bred and owned by exhibitor. All animals to be shown in individual classes

24. Get of Sire – 3 animals both sexes represented, sire by one bull, all owned by exhibitor. All animals to be shown in individual classes to be eligible.

SUPREME CHAMPION BULL – BANNER

RESERVE SUPREME CHAMPION BULL - BANNER

Division B: HERDSMANSHIP

Premiums:

Herdsmanship: 1st = \$40.00 2nd = \$25.00 3rd = \$15.00

Class:

1. Beef Cattle Herdsmanship

Division C: SHOWMANSHIP

Premiums:

Showmanship: 1st = \$15.00 2nd = \$11.25 3rd = 7.50

Class:

Age calculated as of January 1, 2023 to participate in showmanship class

1. Pre-Pee Wee (age 6 and younger)
2. Pee Wee (ages 7-9)
3. Junior (ages 9-12)
4. Intermediate (ages 13-16)
5. Senior (ages 17-21)

Division D: DEMONSTRATIONS

Please contact Department Superintendent to confirm availability for your demonstration. If available, a date and time will be assigned to you.

Classes:

Interactive Demonstration: Educate Fairgoers how to make or do something. Bring materials for participants to actively learn and take away their creation.

- | | |
|---|-----------|
| 1. Interactive Demonstration – One Hour | 80 points |
| 2. Interactive Demonstration – 45 Minutes | 60 points |
| 3. Interactive Demonstration – 30 Minutes | 40 points |

Informative Demonstration: Educate Fairgoers how to do something. Make it a fun learning experience where they can take what they learn from you and do it at home. Bring props help tell your story.

- | | |
|---|-----------|
| 4. Informative Demonstration – 30 Minutes | 60 points |
| 5. Informative Demonstration – 15 Minutes | 50 points |

Revised: 6/15/2023 - MW